



For sublease

Toringdon 7 - Suite 125 & 150 **3,797 - 8,610 r.s.f. available**

- Move in immediately! (LEX February 2030)
- Suite 125 (3,797 s.f.) - Shell condition, ready for customization
- Suite 150 (4,813 s.f.) - Newly upfitted space with modern finishes, brand new Herman Miller furniture and state-of-the-art AV
- Located within T7, Toringdon Office Park's newest building
- 4.0/1,000 parking (structured and surface)
- Fitness Center within park and walkable to restaurants and retail
- Rental rate negotiable

3540 Toringdon Way,
Charlotte NC

Jaime Boast
+1 703 201 5448
jaime.boast@jll.com

Bryan White
+1 704 724 6121
bryan.white@jll.com

toringdon7sublease.com

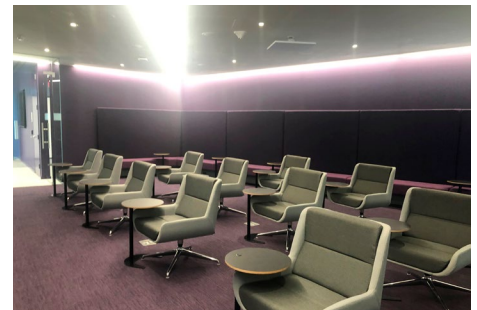
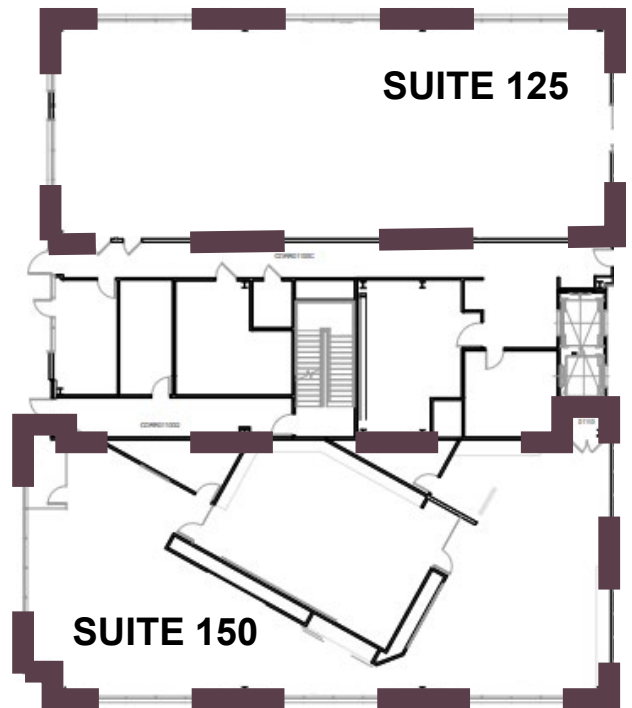


TORINGDON 7

FIRST FLOOR 3,797 to 8,610 s.f.

Suite 125 - 3,797 s.f. (shell condition)

Suite 150 - 4,813 s.f. (built out)



Visit toringdon7sublease.com for photos, video & more!

DISCLAIMER

©2020 Jones Lang LaSalle IP, Inc. All rights reserved. All information contained herein is from sources deemed reliable; however, no representation or warranty is made to the accuracy thereof.

